

Accent Makes Your Job Easier, & the Claims Process More Efficient.

View 3D Images, 360° Virtual Tours and Floor Plans of Properties Post-Loss to Assess Property Damage Before Stepping On-Scene.

Accent's 24-hour emergency services guarantee we are on scene at the time of a fire or property damage ready to capture precise visual and written property documentation provided to you within eight hours of the loss.

Easily accessible post-loss property documentation arms you with the ability to scope out damage online before stepping on-scene and begin conducting assessments and estimates remotely.

Our state-of-the-art Accent View camera creates interactive virtual tours that serve as a complete audit of contents and damage for proof-of-claim, post-claim clean-up, site documentation and content placement.

Innovative 360 degree scanning technology retains exact property dimensions and allows you to walk through immersive 3D tours of properties to assess damage. This expedites interior and exterior structural inspections and ensures fair and accurate compensation on every loss.

Comprehensive property documentation eliminates the need to negotiate line items and automatically settles disputes. Every scan is time-stamped so images can't be altered, creating an unbiased, indisputable record. Giving claims adjusters access to data like never before.

Accent's camera services not only ensure fair and accurate estimates, but save all parties time and money by reducing the need to capture hundreds of photos and expediting the claims process.

Key Benefits:

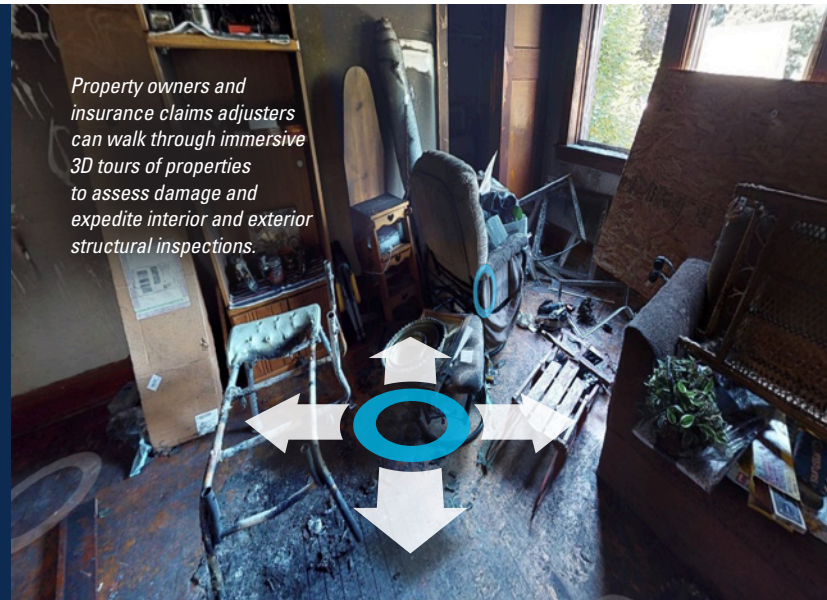
- > Eliminate hours of measuring and sketching
- > No more missing photos - capture the loss fully
- > Conduct remote adjusting or remote estimating
- > Capture any pre-packout damage to contents

For a demonstration of our 3D camera technology capabilities visit Accent24hr.com

Innovative 360 degree scanning technology retains exact property dimensions providing a complete audit of damage and contents.



Property owners and insurance claims adjusters can walk through immersive 3D tours of properties to assess damage and expedite interior and exterior structural inspections.



**FAIR & ACCURATE
ESTIMATES**



**AUTOMATIC FLOOR
PLAN CREATION**



**EASILY SHAREABLE
WITH ADJUSTERS,
ESTIMATORS OR
CONSULTANTS**