

Preserve 3D Images, 360° virtual tours and floor plans of your home in case of a property damage emergency

Damage caused by fire, water or wind is unpredictable, but the restoration process doesn't have to be.

Protect your property and peace of mind by keeping precise visual and written documentation of your home and contents online, accessible to you, your claims adjuster and your insurance agent at any time. Property documentation ensures fair and accurate compensation for property damage and the loss of your valued possessions.

Our state-of-the-art Accent View camera creates an interactive virtual tour of your property to walk through. This, along with our written documentation, serves as a complete audit of pre-loss property condition and content placement. You won't have to worry about a single item in your home being overlooked or neglected.

Comprehensive property documentation eliminates the need to negotiate line items and automatically settles any disputes. Every scan is time-stamped so images can't be altered, creating an unbiased, indisputable record. This gives you more control over the claims process, and ensures everything in your home is covered and properly restored.

Accent's camera services not only ensure fair and accurate damage compensation, but save you time by expediting the claims process. Getting you back in your home – and back to normal – faster.

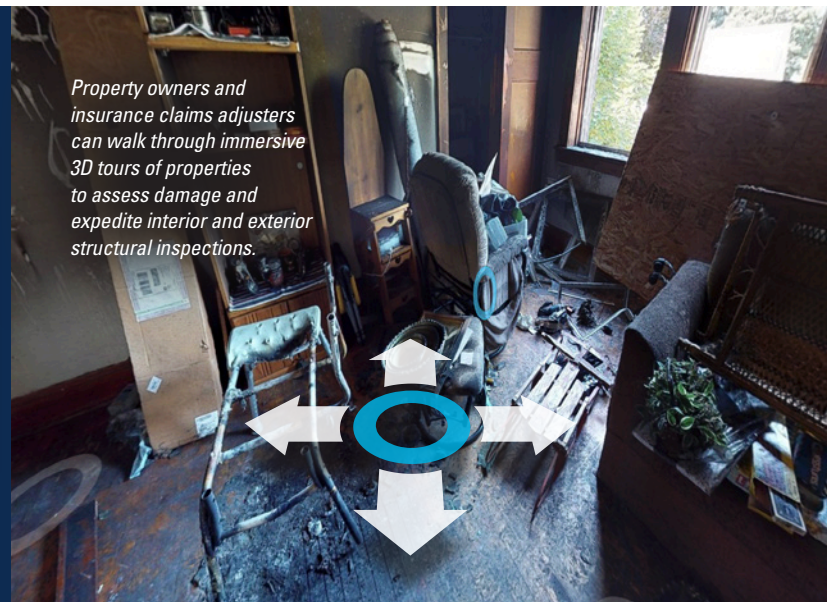
Our professional, in-house team captures most homes in 45 minutes or less, arming you with property documentation to protect you for a lifetime.

Reach out to Accent today to start protecting your home. View a virtual tour at Accent24hr.com

Innovative 360 degree scanning technology retains exact property dimensions providing a complete audit of damage and contents.



Property owners and insurance claims adjusters can walk through immersive 3D tours of properties to assess damage and expedite interior and exterior structural inspections.



**FAIR & ACCURATE
ESTIMATES**



**AUTOMATIC FLOOR
PLAN CREATION**



**EASILY SHAREABLE
WITH ADJUSTERS,
ESTIMATORS OR
CONSULTANTS**