

Easily capture 3D images, 360° virtual tours and floor plans of your property for *pre and post-loss documentation*

Accent's 3D camera provides precise visual and written documentation of properties for claims adjusters to ensure fair and accurate compensation on every loss.

The state-of-the-art Accent View camera creates interactive virtual tours of properties and documentation providing a complete audit of damage and contents for proof-of-claim, post-claim clean-up, site documentation and content placement.

Comprehensive property documentation all in one place eliminates the need to negotiate line items and automatically settles disputes. Every scan is time-stamped with no ability to alter images, creating an unbiased, indisputable source of truth giving property owners and claims adjusters access to data never had before.

Accent's camera services not only ensure fair and accurate estimates, but save all parties time and money by reducing the need to capture hundreds of photos expediting the claims process.

Get ahead of the game by having pre-loss visual and written property documentation on file in case of an emergency.

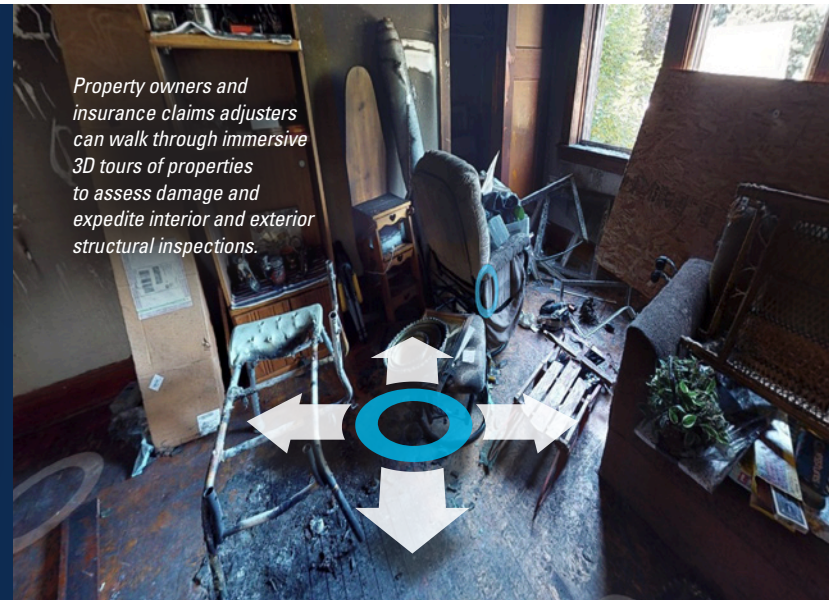
Pre-loss property documentation further prepares you to expedite the claims process and restoration, and arms you with tools to receive fair and accurate compensation proving indisputable pre-loss property and content condition.

For a demonstration of our 3D camera technology capabilities visit Accent24hr.com

Innovative 360 degree scanning technology retains exact property dimensions providing a complete audit of damage and contents.



Property owners and insurance claims adjusters can walk through immersive 3D tours of properties to assess damage and expedite interior and exterior structural inspections.



**FAIR & ACCURATE
ESTIMATES**



**AUTOMATIC FLOOR
PLAN CREATION**



**EASILY SHAREABLE
WITH ADJUSTERS,
ESTIMATORS OR
CONSULTANTS**